

Bury compact

Partners working together...



... for the people of Bury

What is a compact?

A compact is an agreement to improve the relationship between us and our partners, and the voluntary and community sector.

It:

- helps us to understand the different organisations who work in different ways;
- sets a standard for communication, consultation and support; and
- gives us a practical tool to help us to work together.

Our compact is not a legally binding contract. Its authority comes from the involvement and commitment of those who help put it together and who sign up to its principles and ways of working.

Why do we need a compact?

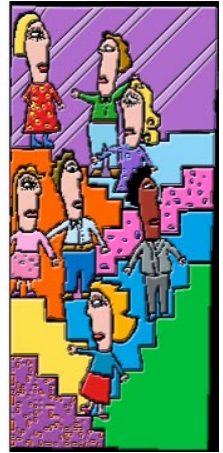
We want to:

- strengthen and improve partnership working between all partners in the public, voluntary and community sectors; and
- show we value and respect each organisation's rights and responsibilities.

A clear and open framework will help all of us with:

- better communication;
- better understanding;
- better relationships;
- better partnerships; and
- better value.

The main principle of the compact is that voluntary and community activity is very important in making sure that all people are included and valued in society.



compact

We are working to:

- develop a stronger, more confident community;
- improve communication and relationships between the sectors and organisations in Bury;
- develop effective two-way partnerships;
- agree on shared principles and objectives;
- develop processes which encourage volunteers and community groups to get involved at every level;
- include all members of society in our approach;
- have a better understanding of each other's organisations - structures, ways of working and priorities; and
- deliver better services by working together.

In putting together this agreement, we, as partners, are not starting from scratch but building on relationships that have developed over many years.

What we believe in

Our compact is based on shared principles:

- The voluntary and community sectors, as well as us and our partners, have different but complementary roles and responsibilities in developing policy and delivering services in Bury.
- An independent and diverse voluntary and community sector is essential to the well being of society.
- We are committed to promoting diversity - that means opportunities for all people no matter what their background, race, ethnic origin, disability, sex, age, sexuality or religion.
- Voluntary and community groups make a valuable contribution to the economic success of Bury.
- We respect the right and duty of voluntary and community groups to campaign within the law.
- Our partnership working is based on shared values-honesty, openness and mutual respect.

compact

We recognise that groups and organisations may have different viewpoints on particular issues, and this can result in a healthy tension in the relationship.

What we can do together

We can:

- develop policies and services to meet the present and future needs of local people and communities in Bury;
- improve and maintain the quality of those services;
- set up a clear and effective communications network;
- be open in the way we work;
- recognise that we must answer to our users and funders;
- promote good relationships with, and between, agencies and sectors;
- make sure equality policies are put into practice in every aspect of our work;
- promote ways to get more people involved and taking an active part in the community;
- meet the specific needs, interests and contributions of disadvantaged groups so they can take part fully in their community;
- promote and work towards equal access and opportunity in activities, facilities, information, services, training and employment;
- find ways to monitor and assess our work so that this compact makes a real and positive difference through joint working;
- promote and develop good practice in volunteering to make sure that volunteers are appropriately placed, trained, supported and valued;
- share information and good practice;
- review the principles set out in our compact from time to time; and
- invest time and energy to put the compact into practice, and jointly review how effective it is every year.



compact

What are we signing up to?

The council and our partners are agreeing to:

- acknowledge and support the independence of the voluntary and community sector, including their right to campaign within the law;
- consult the voluntary and community sector on relevant policies, ways of working and budget priorities where these directly affect their work;
- develop and agree good-practice guidelines on funding, consultation, volunteering, black and ethnic-minority groups, and community groups;
- respect the confidentiality of information provided by the voluntary sector;
- review how effective the compact is (and our activities which support this compact) with our partners from the voluntary and community sector; and
- promote the principles set out in this compact to other public-sector agencies in Bury.



We expect each council department or service to acknowledge and support this compact when they are developing (or revising) policies, strategies, action plans and partnerships.

The voluntary and community organisations agree to:

- set up and monitor standards that are appropriate to their own group and the context in which they work;
- work within their own rules and within the law;
- work towards having skilled and competent management committees who understand and fulfil their responsibilities;
- collect, record and monitor information about what they do to help decide how well they are meeting the needs of their users;
- actively encourage their users to get involved in consultation and partnership working;

compact

- encourage their users to help develop and manage services, where appropriate; and
- avoid repeating work that has already been done and work with other voluntary or community groups to make the most of resources.

How do we know the compact is working in the way that we want it to?

To check that the compact is working properly and make any improvements, everyone who signs up to it agrees to:

- put together a plan for working together that will help monitor progress;
- review the compact and good-practice guidelines every year, and formally review the compact after three years;
- renew our commitment to the compact every year; and
- send regular updates and reports on progress to the Bury Local Strategic Partnership (the group who will monitor the work on the compact).

What can you do if there is a problem?

We can sort out misunderstandings or disagreements by:

- writing to our lead officers, or the Bury Local Strategic Partnership;
- asking for an opinion from an independent person, such as your local Ombudsman; or
- asking for mediation to help decide the way forward, by contacting the Compact Advocacy Programme or the Compact Mediation Service.



If you would like more information on this compact and how to get more involved, please contact the following lead officers:

Safina Rashid, Bury Metropolitan Borough Council, on 0161 253 5192
E-mail: S.Rashid@bury.gov.uk

Mike France, Bury Council for Voluntary Service, on 0161 447 8450
E-mail: mike@burycvs.org.uk

You can get this compact in other formats if you ask us, for example, in Braille, in large print, in other languages, on tape or on disk.

compact

Organisations who have signed up to the compact



Age Concern - Bury Metro
Anchor Staying Put
Asian Development Association
of Bury (ADAB)
BADDAC (Bury and District
Disabled Advisory Council)
Bury Asian Women's Centre
Bury Council for Voluntary
Service (CVS)
Bury Housing Concern
Bury Independent Advice Centre
(BIAC)
Bury Local Strategic Partnership
(LSP)
Bury Metro Deaf Society
Bury Metropolitan Borough
Council (MBC)
Bury Primary Care Trust (PCT)
Bury Racial Equality Council
(REC)
Bury Shopmobility
Bury Victim Support and Witness
Service
Bury Women's Aid
Castle Knights Sports Group

Chesham Fold Tenants' and
Residents' Association
Citizens Advice
Connexions Bury
Crossroads
Greater Manchester Police
Housing 21
Hurdles
Jinnah Centre
Job Centre Plus
Manchester Jewish Federation
Manchester Methodist Housing
Association
Mosses Community Association
Multiple Sclerosis (MS) Society
North Manchester Jewish Youth
Project
NCH - Re:d Centre
NCH - Bury Family Centre
Relate Bury, Oldham and
Rochdale
Seedfield Residents Association
TRACC (Tenants' and Residents'
Consultative Committee)